



Certificate HK07/01191.00

The management system of

**ELITEGROUP COMPUTER  
SYSTEMS CO., LTD.  
ECS MANUFACTURING  
(SHENZHEN) CO., LTD.**

2F, No.240, Sec.1, Nei Hu Road, Taipei, Taiwan 114, R.O.C  
No.20 & No.26 (Except 1F, 2F&3F) Free Trade Zone, Shatoujiao,  
Shenzhen City, Guangdong Province, China  
has been assessed and certified as meeting the requirements of



**ISO 9001:2000**

For the following activities

**Design and Sales of Mainboards, Personal Computers,  
Notebooks, and Peripheral Cards;  
Design and Manufacturing of Mainboards and Peripheral Cards;**

Further clarifications regarding the scope of this certificate and the applicability of  
ISO 9001:2000 requirements may be obtained by consulting the organization  
This certificate is valid from 16 March 2007 until 15 March 2010  
Issue 1. Certified with SGS since March 2007

Multiple certificates have been issued for this scope  
The main certificate is numbered HK07/01191.00

Authorised by

*P. Earl*



SGS United Kingdom Ltd Systems & Services Certification  
Rossmore Business Park Eresmore Port Cheshire CH65 3EN UK  
t +44 (0)151 350-6666 f +44 (0)151 350-6600 www.sgs.com

Page 1 of 1





Certificate No.  
**PRC-HSPM-1172**

Issued: July 10, 2007  
Revision: N/A  
Expiration: July 09, 2010

**IECQ Certificate of Hazardous Substance Process Management (HSPM)  
applicable to the European Directive 2002/95/EC ("RoHS") requirements.**

The Supervising Inspectorate (SGS-CSTC Standards Technical Services Co., Ltd.), sponsored by the United States National Authorized Institution, ECCB certify that

**ECS Manufacturing (Shenzhen) Co., Ltd.**

No. 20 & 26 (except 1F, 2F & 3F),  
Free Trade Zone, Shatoujiao,  
Shenzhen, Guangdong Province, P.R. China

Has developed and implemented Hazardous Substances Process Management, procedures, and related processes in compliance with the applicable requirements for HSPM organization approval which is in accordance with the Basic Rules IECQ-01 and Rules of Procedure QC 001002-3 "IECQ Hazardous Substance Process Management" of the IEC Quality Assessment System for Electronic Components (IECQ), and with respect to the Specification QC 080000 IECQ HSPM.

**This certification is applicable to all electronic components and related materials and processes for the**

Design and manufacture of Mainboards and Peripheral Cards.

Issued by Certification Authorities:



Electronic Component Certification Board

Signed:

Stanley H. Salot Jr. - President, ECCB  
ECCB  
PO Box 9041  
Midland, Texas 79708  
Tel: (432) 697-9970 Fax: (866) 260-6181  
Web Site: [www.eccb.org](http://www.eccb.org)



SGS-CSTC Standards Technical Services Co., Ltd  
16F Century YuHui Mansion  
73 Fucheng Road  
Beijing, China  
Web Site: [www.sgs.com](http://www.sgs.com)

The validity of this certificate is maintained through on-going surveillance inspections.

Note: This certificate is valid only in conjunction with the approval document(s). This approval and this certificate may be suspended or withdrawn in accordance with the Rules of Procedure of the IECQ. This certificate remains the property of the body which granted it.

# Preface

## Copyright

This publication, including all photographs, illustrations and software, is protected under international copyright laws, with all rights reserved. Neither this manual, nor any of the material contained herein, may be reproduced without written consent of the author.

Version 1.0

## Disclaimer

The information in this document is subject to change without notice. The manufacturer makes no representations or warranties with respect to the contents hereof and specifically disclaims any implied warranties of merchantability or fitness for any particular purpose. The manufacturer reserves the right to revise this publication and to make changes from time to time in the content hereof without obligation of the manufacturer to notify any person of such revision or changes.

## Trademark Recognition

Microsoft, MS-DOS and Windows are registered trademarks of Microsoft Corp.

MMX, Pentium, Pentium-II, Pentium-III, Celeron are registered trademarks of Intel Corporation.

Other product names used in this manual are the properties of their respective owners and are acknowledged.

## Federal Communications Commission (FCC)

This equipment has been tested and found to comply with the limits for a Class B digital device, pursuant to Part 15 of the FCC Rules. These limits are designed to provide reasonable protection against harmful interference in a residential installation. This equipment generates, uses, and can radiate radio frequency energy and, if not installed and used in accordance with the instructions, may cause harmful interference to radio communications. However, there is no guarantee that interference will not occur in a particular installation. If this equipment does cause harmful interference to radio or television reception, which can be determined by turning the equipment off and on, the user is encouraged to try to correct the interference by one or more of the following measures:

- Reorient or relocate the receiving antenna
- Increase the separation between the equipment and the receiver
- Connect the equipment onto an outlet on a circuit different from that to which the receiver is connected
- Consult the dealer or an experienced radio/TV technician for help

Shielded interconnect cables and a shielded AC power cable must be employed with this equipment to ensure compliance with the pertinent RF emission limits governing this device. Changes or modifications not expressly approved by the system's manufacturer could void the user's authority to operate the equipment.

## Declaration of Conformity

This device complies with part 15 of the FCC rules. Operation is subject to the following conditions:

- This device may not cause harmful interference, and
- This device must accept any interference received, including interference that may cause undesired operation





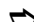

## Canadian Department of Communications

This class B digital apparatus meets all requirements of the Canadian Interference-causing Equipment Regulations.

Cet appareil numérique de la classe B respecte toutes les exigences du Règlement sur le matériel brouilleur du Canada.

## About the Manual

The manual consists of the following:

<b>Chapter 1</b> <b>Introducing the Motherboard</b>	Describes features of the motherboard. Go to  page 1
<b>Chapter 2</b> <b>Installing the Motherboard</b>	Describes installation of motherboard components. Go to  page 7
<b>Chapter 3</b> <b>Using BIOS</b>	Provides information on using the BIOS Setup Utility. Go to  page 25
<b>Chapter 4</b> <b>Using the Motherboard Software</b>	Describes the motherboard software Go to  page 43
<b>Chapter 5</b> <b>ATI CrossfireX™ Technology Support</b>	Describes the ATI CrossfireX™ Technology Go to  page 49
<b>Chapter 6</b> <b>Intel® Matrix Storage Manager RAID Configurations</b>	Describes the Intel® Matrix Storage Manager RAID Configurations Go to  page 53

## **TABLE OF CONTENTS**

---



---

Preface	i
Chapter 1	1
<b>Introducing the Motherboard</b>	<b>1</b>
Introduction.....	1
Feature .....	2
Specifications.....	4
Motherboard Components.....	5
 Chapter 2	 <b>7</b>
<b>Installing the Motherboard</b>	<b>7</b>
Safety Precautions.....	7
Choosing a Computer Case.....	7
Installing the Motherboard in a Case.....	7
Checking Jumper Settings.....	8
<i>Setting Jumpers.....</i>	<i>8</i>
<i>Checking Jumper Settings.....</i>	<i>9</i>
<i>Jumper Settings.....</i>	<i>9</i>
Installing Hardware.....	10
<i>Installing the Processor.....</i>	<i>10</i>
<i>Installing Memory Modules.....</i>	<i>12</i>
<i>Expansion Slots.....</i>	<i>14</i>
<i>Connecting Optional Devices.....</i>	<i>16</i>
<i>Installing a Hard Disk Drive/CD-ROM/SATA Hard Drive...18</i>	<i>18</i>
<i>Installing a Floppy Diskette Drive.....</i>	<i>19</i>
Connecting I/O Devices.....	20
Connecting Case Components.....	21
<i>Front Panel Header.....</i>	<i>23</i>
 Chapter 3	 <b>25</b>
<b>Using BIOS</b>	<b>25</b>
About the Setup Utility.....	25
<i>The Standard Configuration.....</i>	<i>25</i>
<i>Entering the Setup Utility.....</i>	<i>25</i>
<i>Updating the BIOS.....</i>	<i>27</i>
Using BIOS.....	27
<i>Standard CMOS Setup.....</i>	<i>28</i>
<i>Advanced Setup.....</i>	<i>30</i>
<i>Advanced Chipset Setup.....</i>	<i>33</i>

	<i>Integrated Peripherals</i> .....	34
	<i>Power Management Setup</i> .....	35
	<i>PCI/PNP Configuration</i> .....	36
	<i>PC Health Status</i> .....	37
	<i>M.I.B. (MB Intelligent BIOS)</i> .....	39
	<i>Load Default Settings</i> .....	41
	<i>Supervisor Password</i> .....	41
	<i>User Password</i> .....	42
	<i>Save &amp; Exit Setup</i> .....	42
	<i>Exit Without Saving</i> .....	42
Chapter 4		<b>43</b>
<b>Using the Motherboard Software</b>		<b>43</b>
	About the Software CD-ROM.....	43
	Auto-installing under Windows XP/Vista.....	43
	<i>Running Setup</i> .....	44
	Manual Installation.....	48
	Utility Software Reference.....	48
Chapter 5		<b>49</b>
<b>ATI CrossFireX™ Technology Support</b>		<b>49</b>
	Requirements.....	49
	Installing a single graphics card.....	49
	Installing CrossFireX™ graphics cards.....	50
	The Catalyst™ Control Center Dialog Box.....	52
	<i>View</i> .....	52
	<i>To Enable CrossFireX™</i> .....	52
Chapter 6		<b>53</b>
<b>Intel® Matrix Storage Manager RAID Configurations</b>		<b>53</b>
	Before creating a RAID set.....	53
	Entering Intel® Matrix Storage Manager RAID BIOS utility...54	
	Creating a RAID set.....	55
	Deleting a RAID set.....	57
	Resetting disks to Non-RAID.....	58
	Exiting Setup.....	58

## Chapter 1

### *Introducing the Motherboard*

---

#### **Introduction**

Thank you for choosing the P45T-AD3 motherboard. This motherboard is a high performance, enhanced function motherboard designed to support the LGA775 socket Intel® Yorkfield/Wolfdale/Core™ 2 Extreme processors for high-end business or personal desktop markets.

The motherboard incorporates the Intel Eaglelake P45 Northbridge (NB) and Intel ICH10R Southbridge (SB) chipsets. The Northbridge supports a Front Side Bus (FSB) frequency of 1600(overclocking)/1333/1066 MHz using a scalable FSB Vcc\_CPU. The memory controller supports DDR3 memory DIMM frequencies of 1600(overclocking)/1333/1066/800. It supports four DDR3 sockets with maximum memory size of 8 GB. High resolution graphics via two PCI Express x16 slots, intended for Graphics Interface, are fully compliant to the PCI Express Base Specification Revision 2.0. It supports the ATI CrossFireX™ Technology that allows you to install GPU graphics cards.

The ICH10R Southbridge supports two PCI slots which are PCI v2.3 compliant. It implements an EHCI compliant interface that provides 480 Mb/s bandwidth for twelve USB 2.0 ports (six USB ports and three USB 2.0 headers support additional six USB ports). One onboard IDE connector supports two IDE devices in Ultra ATA 133/100/66/33 mode. The Southbridge supports six SATA ports with maximum transfer rate up to 3.0 Gb/s each. It supports Intel® Matrix Storage Technology, providing both AHCI and RAID 0, 1, 5 and 10 configuration.

There is an advanced full set of I/O ports in the rear panel, including PS/2 mouse and keyboard connectors, one serial port, one ESATA port, six USB ports, one LAN port and audio jacks for microphone, line-in and 8-ch line-out.

## Feature

### Processor

This motherboard uses an LGA775 type of Intel® Yorkfield/Wolfdale/Core™ 2 Extreme that carries the following features:

- Accommodates Intel® Yorkfield/Wolfdale/Core™ 2 Extreme processors
- Supports a system bus (FSB) of 1600(overclocking)/1333/1066 MHz

### Chipset

The P45 Northbridge (NB) and ICH10R Southbridge (SB) chipsets are based on an innovative and scalable architecture with proven reliability and performance.

- |                    |   |
|--------------------|---|
| <b>P45 (NB)</b>    | <ul style="list-style-type: none"> <li>• Supports 36-bit host bus addressing, allowing the CPU to access the entire 64 GB of the memory address space.</li> <li>• 2 GB/s point-to-point Direct Media Interface (DMI) to ICH10 (1 GB/s each direction)</li> <li>• Two PCI Express x16 slots, intended for Graphics Interface, are fully compliant to the PCI Express Base Specification Revision 2.0.</li> <li>• Supports 512-Mb and 1-Gb DDR2 and 512-Mb, 1-Gb, and 2-Gb DDR3 DRAM technologies for x8 and x16 devices</li> </ul> |
| <b>ICH10R (SB)</b> | <ul style="list-style-type: none"> <li>• Enhanced DMA Controller, interrupt controller, and timer functions</li> <li>• Compliant with PCI Express Base Specification, revision 1.1</li> <li>• Compliant with PCI v2.3 specification</li> <li>• Compliant with SATA 3.0 Gb/s Host Controller</li> <li>• Integrated USB 2.0 Host Controller supporting up to twelve USB 2.0 ports</li> <li>• Supports Intel® Matrix Storage Technology, providing both AHCI and RAID 0, 1, 5 and 10 configuration</li> </ul>                        |

### Memory

- Supports DDR3 1600(overclocking)/1333/1066/800 DDR3 SDRAM with Dual-channel architecture
- Accommodates four unbuffered DIMMs
- Up to 2 GB per DIMM with maximum memory size up to 8 GB

### Audio

- RealTek ALC883 7.1ch High Definition audio CODEC

### Onboard LAN

- Gigabit LAN, Athlos L1 PCIe GigaLAN controller

Introducing the Motherboard



## Expansion Options

The motherboard comes with the following expansion options:

- Two PCI Express x16 slots for Graphics Interface
- Two PCI Express x1 slots
- Two 32-bit PCI v2.3 compliant slots
- One IDE connector supporting up to two IDE devices
- One floppy disk drive interface
- Six 7-pin SATA connectors

This motherboard supports Ultra DMA bus mastering with transfer rates of 133/100/66/33 Mb/s.

## Integrated I/O

The motherboard has a full set of I/O ports and connectors:

- Two PS/2 ports for mouse and keyboard
- One Serial port
- One ESATA port
- Six USB ports
- One LAN port
- Audio jacks for microphone, line-in and 8-ch line-out

## BIOS Firmware

The motherboard uses AMI BIOS that enables users to configure many system features including the following:

- Power management
- Wake-up alarms
- CPU parameters
- CPU and memory timing
- EC.S.M.I.B. BIOS

The firmware can also be used to set parameters for different processor clock speeds.



*1. Some hardware specifications and software items are subject to change without prior notice.*

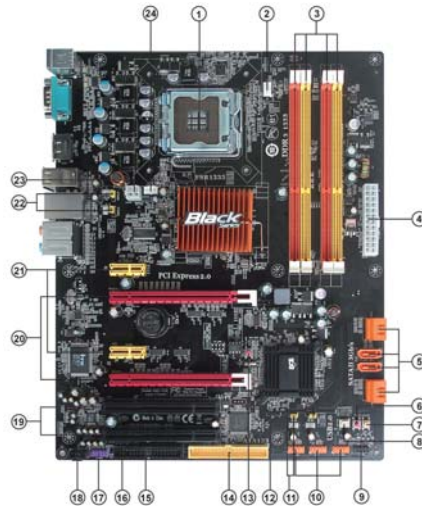
*2. Due to chipset limitation, we recommend that motherboard be operated in the ambience between 0 and 50 °C.*

## Specifications

CPU	<ul style="list-style-type: none"> <li>• LGA775 socket for Intel® Yorkfield/Wolfdale/Core™ 2 Extreme processors</li> <li>• FSB 1600(overclocking)/1333/1066 MHz</li> </ul>
Chipset	<ul style="list-style-type: none"> <li>• Intel Eaglelake P45 &amp; ICH10R</li> <li>• North Bridge: Intel Eaglelake P45</li> <li>• South Bridge: Intel ICH10R</li> </ul>
Memory	<ul style="list-style-type: none"> <li>• Dual-channel DDR3 memory architecture</li> <li>• 4 x 240-pin DDR3 DIMM socket support up to 8 GB</li> <li>• Supports DDR3 1600(overclocking)/1333/1066/800 DDR3 SDRAM</li> </ul>
Expansion Slots	<ul style="list-style-type: none"> <li>• 2 x PCI Express x16 slots</li> <li>• 2 x PCI Express x1 slots</li> <li>• 2 x PCI slots</li> </ul>
Storage	<ul style="list-style-type: none"> <li>• Support by Intel ICH10R</li> <li>• 6 x Serial ATAII devices</li> <li>• Supports RAID0, 1, 5, 10</li> <li>• Support by JMicron® JMB361</li> <li>• 2 x Ultra DMA 133/100/66 device</li> <li>• 1 x ESATAII 3.0 Gb/s device</li> </ul>
Audio	<ul style="list-style-type: none"> <li>• RealTek ALC883 7.1ch High Definition audio CODEC</li> </ul>
LAN	<ul style="list-style-type: none"> <li>• Gigabit LAN, Athlos L1 PCIe GigaLAN controller</li> </ul>
Rear Panel I/O	<ul style="list-style-type: none"> <li>• 1 x PS/2 keyboard &amp; PS/2 mouse connectors</li> <li>• 6 x USB ports</li> <li>• 1 x ESATA port</li> <li>• 1 x COM port</li> <li>• 1 x RJ 45 LAN connector</li> <li>• 1 x Audio port</li> </ul>
Internal I/O Connectors & Headers	<ul style="list-style-type: none"> <li>• 1 x 24-pin ATX Power Supply connector &amp; 8-pin 12V connector</li> <li>• 1 x IDE connector</li> <li>• 6 x Serial ATA connectors</li> <li>• 3 x USB 2.0 headers support additional 6 USB ports</li> <li>• 1 x Clear CMOS button</li> <li>• 1 x Front panel header</li> <li>• 1 x Front panel audio header</li> <li>• 1 x CD_in header</li> <li>• CPUFAN/SYSFAN connectors</li> <li>• 1 x Reset button</li> <li>• 1 x Power on button</li> </ul>
System BIOS	<ul style="list-style-type: none"> <li>• AMI BIOS with 8Mb SPI ROM</li> <li>• Supports Plug and Play, STR/STD, Hardware monitor, PCI interrupt selection, ACPI &amp; DMI, CPU FSB adjustment (increase of 1MHz)</li> <li>• Supports ACPI revision 1.0 specification</li> </ul>
Form Factor	<ul style="list-style-type: none"> <li>• ATX Size, 305mm x 244mm</li> </ul>

Introducing the Motherboard

## Motherboard Components



*Table of Motherboard Components*

LABEL	COMPONENTS
1. CPU Socket	LGA775 socket Intel® Yorkfield/Wolfdale/Core™ 2 Extreme processors
2. CPU_FAN1	CPU cooling fan connector
3. DDR3_1~4	240-pin DDR3 SDRAM slots
4. ATX_POWER	Standard 24-Pin ATX Power connector
5. SATA1~6	Serial ATA connectors
6. PWR_BOT	Power on button
7. RST_BOT	Reset button
8. CASE_FAN	Case cooling fan connector
9. F_PANEL	Front Panel Switch/LED header
10. F_USB1~3	Front Panel USB headers
11. USBPWR_F1~2	Front Panel USB Power Select jumpers
12. SPK	Speaker header
13. CLR_CMOS	Clear CMOS button
14. IDE	Primary IDE connector
15. FDD	Floppy disk drive connector
16. SPDIFO	SPDIF out header
17. F_AUDIO	Front Panel Audio header
18. CD_IN	Analog Audio Input connector
19. PCI2~3	32-bit add-on card slots
20. PCIE16X_1~2	PCI Express x16 graphics card slots
21. PCIE1/3	PCI Express x1 slots
22. USBPWR_R1~2	Rear USB/PS2 Power Select jumpers
23. ATX12V	4-pin +12V power connector
24. SYS_FAN1	System cooling fan connector

This concludes Chapter 1. The next chapter explains how to install the motherboard.  
 Introducing the Motherboard

6

*Memo*

Introducing the Motherboard

## Chapter 2

### *Installing the Motherboard*

---

#### **Safety Precautions**

- Follow these safety precautions when installing the motherboard
- Wear a grounding strap attached to a grounded device to avoid damage from static electricity
- Discharge static electricity by touching the metal case of a safely grounded object before working on the motherboard
- Leave components in the static-proof bags they came in
- Hold all circuit boards by the edges. Do not bend circuit boards

#### **Choosing a Computer Case**

There are many types of computer cases on the market. The motherboard complies with the specifications for the ATX system case. Firstly, some features on the motherboard are implemented by cabling connectors on the motherboard to indicators and switches on the system case. Make sure that your case supports all the features required. Secondly, this motherboard supports one or two floppy diskette drives and two enhanced IDE drives. Make sure that your case has sufficient power and space for all drives that you intend to install.

Most cases have a choice of I/O templates in the rear panel. Make sure that the I/O template in the case matches the I/O ports installed on the rear edge of the motherboard.

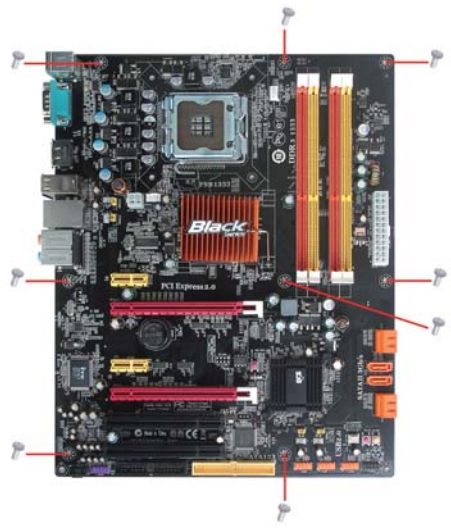
This motherboard carries an ATX form factor of 305 x 244 mm. Choose a case that accommodates this form factor.

#### **Installing the Motherboard in a Case**

Refer to the following illustration and instructions for installing the motherboard in a case.

Most system cases have mounting brackets installed in the case, which correspond the holes in the motherboard. Place the motherboard over the mounting brackets and secure the motherboard onto the mounting brackets with screws.

Ensure that your case has an I/O template that supports the I/O ports and expansion slots on your motherboard.



*Do not over-tighten the screws as this can stress the motherboard.*

### Checking Jumper Settings

This section explains how to set jumpers for correct configuration of the motherboard.

#### Setting Jumpers

Use the motherboard jumpers to set system configuration options. Jumpers with more than one pin are numbered. When setting the jumpers, ensure that the jumper caps are placed on the correct pins.

The illustrations show a 2-pin jumper. When the jumper cap is placed on both pins, the jumper is SHORT. If you remove the jumper cap, or place the jumper cap on just one pin, the jumper is OPEN.

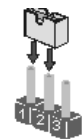


**SHORT**



**OPEN**

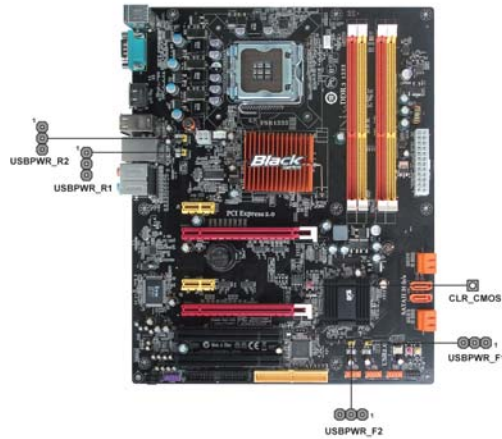
This illustration shows a 3-pin jumper. Pins 1 and 2 are SHORT






## Installing the Motherboard

### Checking Jumper Settings

The following illustration shows the location of the motherboard jumpers. Pin 1 is labeled.



### Jumper Settings

Jumper	Type	Description	Setting (default)	
CLR_CMOS	button	CLEAR CMOS	NO PUSH: NORMAL PUSH: CLEAR Before clearing the CMOS, make sure to turn the system off.	 CLR_CMOS
USBPWR_R1~2	3-pin	Rear USB/PS2 Power Select Jumper	1-2: VCC5 2-3: 5VSB	1  USBPWR_R1~2
USBPWR_F1~2	3-pin	Front Panel USB Power Select Jumper	1-2: VCC5 2-3: 5VSB	 1 USBPWR_F1~2



1. To avoid the system instability after clearing CMOS, we recommend users to enter the main BIOS setting page to "Load Default Settings" and then "Save & Exit Setup".
2. Make sure the power supply provides enough 5VSB voltage before selecting the 5VSB function.
3. It is required that users place the USBPWR\_F1~2 & USBPWR\_R1~2 cap onto 2-3 pin rather than 1-2 pin as default if you want to wake up the computer by USB/PS2 KB/Mouse.

### Installing the Motherboard

## Installing Hardware

### *Installing the Processor*



*Caution: When installing a CPU heatsink and cooling fan make sure that you DO NOT scratch the motherboard or any of the surface-mount resistors with the clip of the cooling fan. If the clip of the cooling fan scrapes across the motherboard, you may cause serious damage to the motherboard or its components.*

*On most motherboards, there are small surface-mount resistors near the processor socket, which may be damaged if the cooling fan is carelessly installed.*

*Avoid using cooling fans with sharp edges on the fan casing and the clips. Also, install the cooling fan in a well-lit work area so that you can clearly see the motherboard and processor socket.*

### **Before installing the Processor**

This motherboard automatically determines the CPU clock frequency and system bus frequency for the processor. You may be able to change the settings in the system Setup Utility. We strongly recommend that you do not over-clock processors or other components to run faster than their rated speed.



*Warning:*

*1. Over-clocking components can adversely affect the reliability of the system and introduce errors into your system. Over-clocking can permanently damage the motherboard by generating excess heat in components that are run beyond the rated limits.*

*2. Always remove the AC power by unplugging the power cord from the power outlet before installing or removing the motherboard or other hardware components.*

This motherboard has an LGA775 socket. When choosing a processor, consider the performance requirements of the system. Performance is based on the processor design, the clock speed and system bus frequency of the processor, and the quantity of internal cache memory and external cache memory.



## CPU Installation Procedure

The following illustration shows CPU installation components.

- A. Read and follow the instructions shown on the sticker on the CPU cap.



- B. Unload the cap
- Use thumb & forefinger to hold the lifting tab of the cap.
  - Lift the cap up and remove the cap completely from the socket.

- C. Open the load plate
- Use thumb & forefinger to hold the hook of the lever, pushing down and pulling aside unlock it.
  - Lift up the lever.
  - Use thumb to open the load plate. Be careful not to touch the contacts.



- D. Install the CPU on the socket
- Orientate CPU package to the socket. Make sure you match triangle marker to pin 1 location.



- E. Close the load plate
- Slightly push down the load plate onto the tongue side, and hook the lever.
  - CPU is locked completely.



- F. Apply thermal grease on top of the CPU.

- G. Fasten the cooling fan supporting base onto the CPU socket on the motherboard.

- H. Make sure the CPU fan is plugged to the CPU fan connector. Please refer to the CPU cooling fan user's manual for more detail installation procedure.



1. To achieve better airflow rates and heat dissipation, we suggest that you use a high quality fan with 3800 rpm at least. CPU fan and heatsink installation procedures may vary with the type of CPU fan/heatsink supplied. The form and size of fan/heatsink may also vary.

2. **DO NOT** remove the CPU cap from the socket before installing a CPU.

3. Return Material Authorization (RMA) requests will be accepted only if the motherboard comes with the cap on the LGA775 socket.

## Installing the Motherboard

### ***Installing Memory Modules***

This motherboard accommodates four memory modules. It can support four 240-pin DDR3 1600(overclocking)/1333/1066/800. The total memory capacity is 8 GB.

#### **DDR3 SDRAM memory module table**

Memory module	Memory Bus
<b><i>DDR3 800</i></b>	<b><i>400 MHz</i></b>
<b><i>DDR3 1066</i></b>	<b><i>533 MHz</i></b>
<b><i>DDR3 1333</i></b>	<b><i>667 MHz</i></b>
<b><i>DDR3 1600</i></b>	<b><i>800 MHz</i></b>

You must install at least one module in any of the four slots. Each module can be installed with 2 GB of memory; total memory capacity is 8 GB.

The four DDR3 memory sockets (DDR3\_1, DDR3\_2, DDR3\_3, DDR3\_4) are divided into two channels and each channel has two memory sockets as following:

- ▶▶ Channel 0: DDR3\_1, DDR3\_2
- ▶▶ Channel 1: DDR3\_3, DDR3\_4



*Do not remove any memory module from its antistatic packaging until you are ready to install it on the motherboard. Handle the modules only by their edges. Do not touch the components or metal parts. Always wear a grounding strap when you handle the modules.*

### **Installation Procedure**

Refer to the following to install the memory modules.

- 1 This motherboard supports unbuffered DDR3 SDRAM only.
- 2 Push the latches on each side of the DIMM slot down.
- 3 Align the memory module with the slot. The DIMM slots are keyed with notches and the DIMMs are keyed with cutouts so that they can only be installed correctly.
- 4 Check that the cutouts on the DIMM module edge connector match the notches in the DIMM slot.
- 5 Install the DIMM module into the slot and press it firmly down until it seats correctly. The slot latches are levered upwards and latch on to the edges of the DIMM.
- 6 Install any remaining DIMM modules.



Installing the Motherboard

**Table A: DDR3 (memory module) QVL (Qualified Vendor List)**

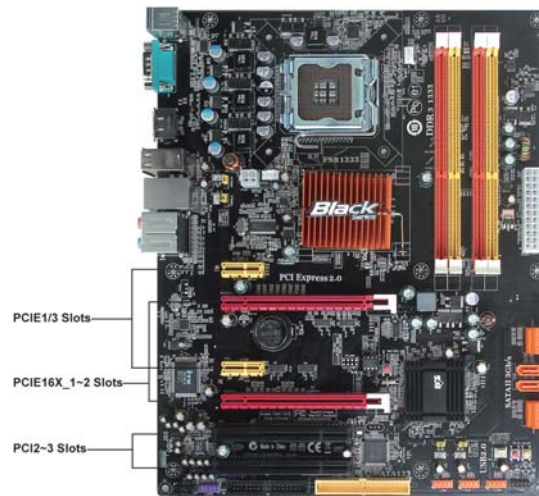
The following DDR3 1333/1066/800 memory modules have been tested and qualified for use with this motherboard.

Type	Size	Vendor	Module Name
DDR3 800	512 MB	Nanya	NT512C64B88A0NY-25D
			NT512C64B88A0NY-BF
	2 GB	HYNIX	HYMT125U64ZNF8-S6 AA
DDR3 1066	512 MB	Aeneon	AEH760UD00-10FA98X
		Elpida	PC3-8500U-7-00-AP
		HYNIX	HYMT164U64ZNF6-G8 AA
		Kingston	KVR1066D3N7
		Micron	MT4JTF6464AY-1G1B1
	1 GB	A-data	M3OSS3H3I3120B5Z A-data Boxed 1GB SS
		Aeneon	AEH760UD00-10FA98X
		Corsair	CM3X1024-1066C7 CORSAIR Boxed 1GB DS
		HYNIX	HYMT112U64ZNF8
		Kingston	KVR1066D3N7
		Micron	MT8JTF12864AY-1G1D1
		Qimonda	IMSH1GU13A1F1C-13H
		2 GB	HYNIX
	Micron		MT18JTF25664AY-1G1D1
	DDR3 1333	1 GB	Corsair
CM3X1024-1333C9DHX Corsair Boxed 1GB DS			
Kingston			KVR1333D3N9
2 GB		A-data	M3OSS6H3J4130E1C5Z
		Qimonda	IMSH2GU13A1F1C-13H B3S81124001

## Expansion Slots

### Installing Add-on Cards

The slots on this motherboard are designed to hold expansion cards and connect them to the system bus. Expansion slots are a means of adding or enhancing the motherboard's features and capabilities. With these efficient facilities, you can increase the motherboard's capabilities by adding hardware that performs tasks that are not part of the basic system.



**PCIe16X\_1~2 Slots** The PCI Express x16 slots are used to install the external PCI Express graphics cards that are fully compliant to the PCI Express Base Specification Revision 2.0. For CrossFireX™ information please refer to Chapter 5.

**PCIe1/3 Slots** The PCI Express x1 slots are fully compliant to the PCI Express Base Specification Revision 1.1.

**PCI2~3 Slots** This motherboard is equipped with two standard PCI slots. PCI stands for Peripheral Component Interconnect and is a bus standard for expansion cards, which for the most part, is a supplement of the older ISA bus standard. The PCI slots on this board are PCI v2.3 compliant.

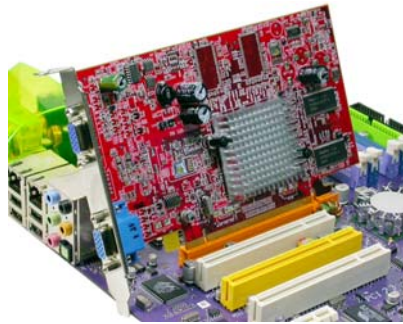


*Before installing an add-on card, check the documentation for the card carefully. If the card is not Plug and Play, you may have to manually configure the card before installation.*

## Installing the Motherboard

Follow these instructions to install an add-on card:

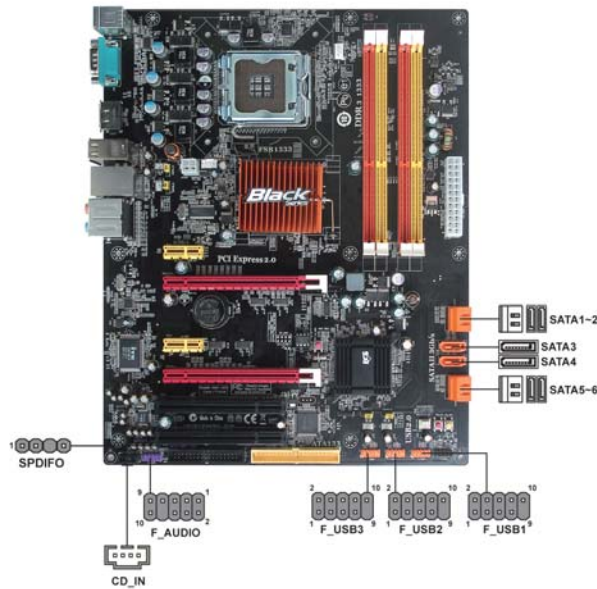
- 1 Remove a blanking plate from the system case corresponding to the slot you are going to use.
- 2 Install the edge connector of the add-on card into the expansion slot. Ensure that the edge connector is correctly seated in the slot.
- 3 Secure the metal bracket of the card to the system case with a screw.



*For some add-on cards, for example graphics adapters and network adapters, you have to install drivers and software before you can begin using the add-on card.*

### Connecting Optional Devices

Refer to the following for information on connecting the motherboard's optional devices:



#### F\_AUDIO: Front Panel Audio header

This header allows the user to install auxiliary front-oriented microphone and line-out ports for easier access.

Pin	Signal Name	Pin	Signal Name
1	PORT 1L	2	AUD_GND
3	PORT 1R	4	PRESENCE#
5	PORT 2R	6	SENSE1_RETURN
7	SENSE_SEND	8	KEY
9	PORT 2L	10	SENSE2_RETURN

#### SPDIFO: SPDIF out header

This is an optional header that provides an S/PDIF (Sony/Philips Digital Interface) output to digital multimedia device through optical fiber or coaxial connector.

Pin	Signal Name	Function
1	SPDIF	SPDIF digital output
2	+5VA	5V analog Power
3	Key	No pin
4	GND	Ground

### F\_USB1~3: Front Panel USB headers

The motherboard has six USB ports installed on the rear edge I/O port array. Additionally, some computer cases have USB ports at the front of the case. If you have this kind of case, use auxiliary USB connector to connect the front-mounted ports to the motherboard.

Pin	Signal Name	Function
1	USBPWR	Front Panel USB Power
2	USBPWR	Front Panel USB Power
3	USB_FP_P0-	USB Port 0 Negative Signal
4	USB_FP_P1-	USB Port 1 Negative Signal
5	USB_FP_P0+	USB Port 0 Positive Signal
6	USB_FP_P1+	USB Port 1 Positive Signal
7	GND	Ground
8	GND	Ground
9	Key	No pin
10	NC	Not connected



Please make sure that the USB cable has the same pin assignment as indicated above. A different pin assignment may cause damage or system hang-up.

### SATA1~6: Serial ATA connectors

These connectors are used to support the new Serial ATA devices for the highest data transfer rates (3.0 Gb/s), simpler disk drive cabling and easier PC assembly. It eliminates limitations of the current Parallel ATA interface. But maintains register compatibility and software compatibility with Parallel ATA.

Pin	Signal Name	Pin	Signal Name
1	Ground	2	TX+
3	TX-	4	Ground
5	RX-	6	RX+
7	Ground	-	-

### CD\_IN: Analog Audio Input connector

Pin	Signal Name	Function
1	CD_L	CD In left channel
2	GND	Ground
3	GND	Ground
4	CD_R	CD In right channel

### ***Installing a Hard Disk Drive/CD-ROM/SATA Hard Drive***

This section describes how to install IDE devices such as a hard disk drive and a CD-ROM drive.

#### **About IDE Devices**

Your motherboard has one IDE interface. An IDE ribbon cable supporting two IDE devices is bundled with the motherboard.



*You must orient the cable connector so that the pin1 (color) edge of the cable corresponds to the pin 1 of the I/O port connector.*

#### **IDE: IDE Connector**

This motherboard supports six high data transfer SATA ports with each runs up to 3.0 Gb/s. To get better system performance, we recommend users connect the CD-ROM to the IDE channel, and set up the hard drives on the SATA ports.



IDE devices enclose jumpers or switches used to set the IDE device as MASTER or SLAVE. Refer to the IDE device user's manual. Installing two IDE devices on one cable, ensure that one device is set to MASTER and the other device is set to SLAVE. The documentation of your IDE device explains how to do this.

#### **About SATA Connectors**

Your motherboard features six SATA connectors supporting a total of six drives. SATA refers to Serial ATA (Advanced Technology Attachment) is the standard interface for the IDE hard drives which are currently used in most PCs. These connectors are well designed and will only fit in one orientation. Locate the SATA connectors on the motherboard and follow the illustration below to install the SATA hard drives.

#### **Installing Serial ATA Hard Drives**

To install the Serial ATA (SATA) hard drives, use the SATA cable that supports the Serial ATA protocol. This SATA cable comes with a SATA power cable. You can connect either end of the SATA cable to the SATA hard drive or the connector on the motherboard.



**SATA cable (optional)**



**SATA power cable (optional)**

Installing the Motherboard



Refer to the illustration below for proper installation:

- 1 Attach either cable end to the connector on the motherboard.
- 2 Attach the other cable end to the SATA hard drive.
- 3 Attach the SATA power cable to the SATA hard drive and connect the other end to the power supply.



*This motherboard does not support the “Hot-Plug” function.*

### ***Installing a Floppy Diskette Drive***

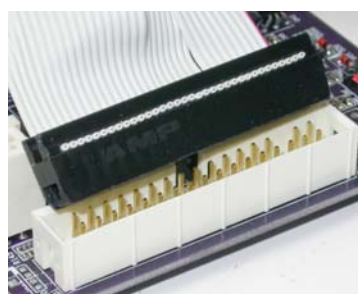
The motherboard has a floppy diskette drive (FDD) interface and ships with a diskette drive ribbon cable that supports one or two floppy diskette drives. You can install a 5.25-inch drive and a 3.5-inch drive with various capacities. The floppy diskette drive cable has one type of connector for a 5.25-inch drive and another type of connector for a 3.5-inch drive.



*You must orient the cable connector so that the pin 1 (color) edge of the cable corresponds to the pin 1 of the I/O port connector.*

### **FDD: Floppy Disk Connector**

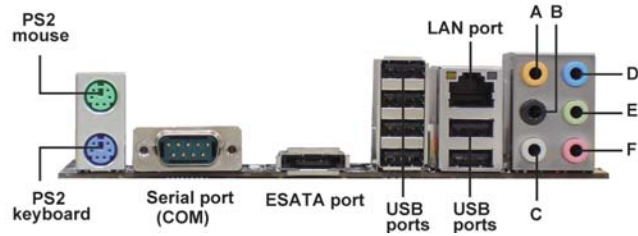
This connector supports the provided floppy drive ribbon cable. After connecting the single end to the onboard floppy connector, connect the remaining plugs on the other end to the floppy drives correspondingly.



Installing the Motherboard

## Connecting I/O Devices

The backplane of the motherboard has the following I/O ports:



**PS2 Mouse** Use the upper PS/2 port to connect a PS/2 pointing device.

**PS2 Keyboard** Use the lower PS/2 port to connect a PS/2 keyboard.

**Serial Port (COM)** Use the COM port to connect serial devices such as mice or fax/modems.

**ESATA Port** Use this port to connect to an external SATA box or a Serial ATA port multiplier.



*Before connecting the eSATA cable, make sure to turn off the power of the external enclosure.*

**USB Ports** Use the USB ports to connect USB devices.

**LAN Port** Connect an RJ-45 jack to the LAN port to connect your computer to the network.

**Audio Ports** Use the audio jacks to connect audio devices. The D port is for stereo line-in signal, while the F port is for microphone in signal. This motherboard supports 8-channel audio devices that correspond to the A,B, C, and E port respectively. In addition, all of the 3 ports, B, C, and E provide users with both right & left channels individually. Users please refer to the following note for specific port function definition.



A: Center & Woofers	D: Line-in
B: Back Surround	E: Front Out
C: Side Surround	F: Mic_in Rear

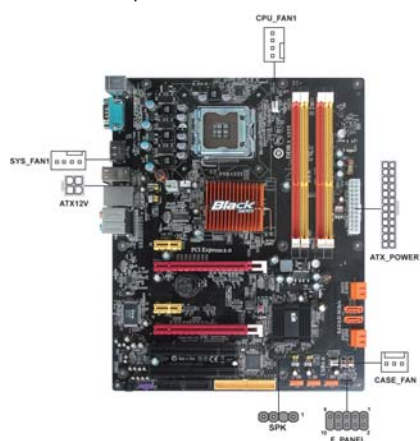
*The above port definition can be changed to audio input or audio output by changing the driver utility setting.*

## Installing the Motherboard

## Connecting Case Components

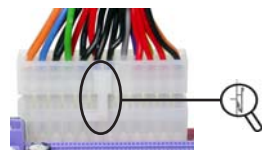
After you have installed the motherboard into a case, you can begin connecting the motherboard components. Refer to the following:

- 1 Connect the CPU cooling fan cable to **CPU\_FAN1**.
- 2 Connect the system cooling fan connector to **SYS\_FAN1**.
- 3 Connect the case cooling fan connector to **CASE\_FAN**.
- 4 Connect the standard power supply connector to **ATX\_POWER**.
- 5 Connect the auxiliary case power supply connector to **ATX12V**.
- 6 Connect the case switches and indicator LEDs to the **F\_PANEL**.
- 7 Connect the case speaker cable to **SPK**.



### 1. Connecting 24-pin power cable

The ATX 24-pin connector allows you to connect to ATX v2.x power supply.



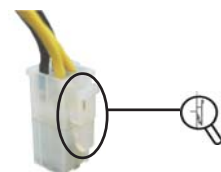
*24-pin power cable*

With ATX v2.x power supply, users please note that when installing 24-pin power cable, the latches of power cable and the ATX\_POWER match perfectly.



### 2. Connecting 4-pin power cable

The ATX12V power connector is used to provide power to the CPU.



*4-pin power cable*

When installing 4-pin power cable, the latches of power cable and the ATX12V match perfectly.

**CPU\_FAN1/SYS\_FAN1: Cooling FAN Power Connector**

Pin	Signal Name	Function
1	GND	System Ground
2	+12V	Power +12V
3	Sense	Sensor
4	Control	CPU FAN control



Users please note that the fan connector supports the CPU cooling fan of 1.1A ~ 2.2A (26.4W max) at +12V.

**CASE\_FAN: Case cooling FAN Power Connector**

Pin	Signal Name	Function
1	GND	System Ground
2	+12V	Power +12V
3	Sense	Sensor

**ATX\_POWER: ATX 24-pin Power Connector**

Pin	Signal Name	Pin	Signal Name
1	+3.3V	13	+3.3V
2	+3.3V	14	-12V
3	Ground	15	Ground
4	+5V	16	PS_ON
5	Ground	17	Ground
6	+5V	18	Ground
7	Ground	19	Ground
8	PWRGD	20	-5V
9	+5VSB	21	+5V
10	+12V	22	+5V
11	+12V	23	+5V
12	+3.3V	24	Ground

**ATX12V: ATX 12V Power Connector**

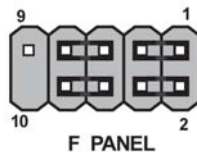
Pin	Signal Name
1	Ground
2	Ground
3	+12V
4	+12V

**SPK: Internal speaker header**

Pin	Signal Name
1	VCC
2	Key
3	GND
4	Signal

### Front Panel Header

The front panel header (F\_PANEL) provides a standard set of switch and LED headers commonly found on ATX or Micro ATX cases. Refer to the table below for information:



Pin	Signal	Function	Pin	Signal	Function
1	HD_LED_P	Hard disk LED (+)	2	FP PWR/SLP	*MSG LED (+)
3	HD_LED_N	Hard disk LED (-)	4	FP PWR/SLP	*MSG LED (-)
5	RST_SW_N	Reset Switch (-)	6	PWR_SW_P	Power Switch (+)
7	RST_SW_P	Reset Switch (+)	8	PWR_SW_N	Power Switch (-)
9	RSVD	Reserved	10	Key	No pin

\* MSG LED (dual color or single color)

### Hard Drive Activity LED

Connecting pins 1 and 3 to a front panel mounted LED provides visual indication that data is being read from or written to the hard drive. For the LED to function properly, an IDE drive should be connected to the onboard IDE interface. The LED will also show activity for devices connected to the SCSI (hard drive activity LED) connector.

### Power/Sleep/Message waiting LED

Connecting pins 2 and 4 to a single or dual-color, front panel mounted LED provides power on/off, sleep, and message waiting indication.

### Reset Switch

Supporting the reset function requires connecting pin 5 and 7 to a momentary-contact switch that is normally open. When the switch is closed, the board resets and runs POST.

### Power Switch

Supporting the power on/off function requires connecting pins 6 and 8 to a momentary-contact switch that is normally open. The switch should maintain contact for at least 50 ms to signal the power supply to switch on or off. The time requirement is due to internal de-bounce circuitry. After receiving a power on/off signal, at least two seconds elapses before the power supply recognizes another on/off signal.

This concludes Chapter 2. The next chapter covers the BIOS.

## Installing the Motherboard

*Memo*

Installing the Motherboard

## Chapter 3

### *Using BIOS*

---

#### **About the Setup Utility**

The computer uses the latest “American Megatrends Inc.” BIOS with support for Windows Plug and Play. The CMOS chip on the motherboard contains the ROM setup instructions for configuring the motherboard BIOS.

The BIOS (Basic Input and Output System) Setup Utility displays the system’s configuration status and provides you with options to set system parameters. The parameters are stored in battery-backed-up CMOS RAM that saves this information when the power is turned off. When the system is turned back on, the system is configured with the values you stored in CMOS.

The BIOS Setup Utility enables you to configure:

- Hard drives, diskette drives and peripherals
- Video display type and display options
- Password protection from unauthorized use
- Power Management features

The settings made in the Setup Utility affect how the computer performs. Before using the Setup Utility, ensure that you understand the Setup Utility options.

This chapter provides explanations for Setup Utility options.

#### ***The Standard Configuration***

A standard configuration has already been set in the Setup Utility. However, we recommend that you read this chapter in case you need to make any changes in the future.

This Setup Utility should be used:

- when changing the system configuration
- when a configuration error is detected and you are prompted to make changes to the Setup Utility
- when trying to resolve IRQ conflicts
- when making changes to the Power Management configuration
- when changing the password or making other changes to the Security Setup

#### ***Entering the Setup Utility***

When you power on the system, BIOS enters the Power-On Self Test (POST) routines. POST is a series of built-in diagnostics performed by the BIOS. After the POST routines are completed, the following message appears:

Using BIOS

***Press DEL to enter SETUP***

Press the delete key to access the BIOS Setup Utility.

CMOS Setup Utility -- Copyright (C) 1985-2008, American Megatrends, Inc.

<ul style="list-style-type: none"> <li>▶ Standard CMOS Setup</li> <li>▶ Advanced Setup</li> <li>▶ Advanced Chipset Setup</li> <li>▶ Integrated Peripherals</li> <li>▶ Power Management Setup</li> <li>▶ PCI/PnP Setup</li> <li>▶ PC Health Status</li> </ul>	<ul style="list-style-type: none"> <li>▶ M.I.B. (MB Intelligent BIOS)</li> <li>Load Default Settings</li> <li>▶ Supervisor Password</li> <li>▶ User Password</li> <li>Save &amp; Exit Setup</li> <li>Exit Without Saving</li> </ul>
↑↓ <> :Move    Enter : Select    +/-: Value    F10: Save    ESC: Exit F1:General Help                      F9: Load Default Settings	
v02.61 (C)Copyright 1985-2008, American Mega trends, Inc.	

***BIOS Navigation Keys***

The BIOS navigation keys are listed below:

KEY	FUNCTION
<b>ESC</b>	Exits the current menu
↑↓ <>	Scrolls through the items on a menu
+/-/PU/PD	Modifies the selected field's values
<b>Enter</b>	Select
<b>F9</b>	Load a default optimized setting
<b>F10</b>	Saves the current configuration and exits setup
<b>F1</b>	Displays a screen that describes all key functions



### ***Updating the BIOS***

You can download and install updated BIOS for this motherboard from the manufacturer's Web site. New BIOS provides support for new peripherals, improvements in performance, or fixes for known bugs. Install new BIOS as follows:

- 1 If your motherboard has a BIOS protection jumper, change the setting to allow BIOS flashing.
- 2 If your motherboard has an item called Firmware Write Protect in Advanced BIOS features, disable it. (Firmware Write Protect prevents BIOS from being overwritten.)
- 3 Create a bootable system disk. (Refer to Windows online help for information on creating a bootable system disk.)
- 4 Download the Flash Utility and new BIOS file from the manufacturer's Web site. Copy these files to the system diskette you created in Step 3.
- 5 Turn off your computer and insert the system diskette in your computer's diskette drive. (You might need to run the Setup Utility and change the boot priority items on the Advanced BIOS Features Setup page, to force your computer to boot from the floppy diskette drive first.)
- 6 At the A:\ prompt, type the Flash Utility program name and the file name of the new bios and then press <Enter>. Example: AMINF340.EXE 040706.ROM
- 7 When the installation is complete, remove the floppy diskette from the diskette drive and restart your computer. If your motherboard has a Flash BIOS jumper, reset the jumper to protect the newly installed BIOS from being overwritten. The computer will restart automatically.

### **Using BIOS**

When you start the Setup Utility, the main menu appears. The main menu of the Setup Utility displays a list of the options that are available. A highlight indicates which option is currently selected. Use the cursor arrow keys to move the highlight to other options. When an option is highlighted, execute the option by pressing <Enter>.

Some options lead to pop-up dialog boxes that prompt you to verify that you wish to execute that option. Other options lead to dialog boxes that prompt you for information.

Some options (marked with a triangle ►) lead to submenus that enable you to change the values for the option. Use the cursor arrow keys to scroll through the items in the submenu.

In this manual, default values are enclosed in parenthesis. Submenu items are denoted by a triangle ►.

### Standard CMOS Setup

This option displays basic information about your system.

CMOS Setup Utility -- Copyright (C) 1985-2008, American Megatrends, Inc.  
Standard CMOS Setup

Date	Fri 08/15/2008	Help Item
Time Alarm (hh:mm:ss)	00:01:16	
▶ SATA1	Hard Disk	Use [ENTER], [TAB] or [SHIFT-TAB] to select a field.  Use [+] or [-] to configure system Date.
▶ SATA2	Not Detected	
▶ SATA3	Not Detected	
▶ SATA4	Not Detected	
▶ SATA5	Not Detected	
▶ SATA6	Not Detected	
IDE BusMaster	Enabled	
Drive A:	1.44 MB 3 $\frac{1}{2}$ "	

↑↓ ↔ : Move    Enter : Select    +/- : Value    F10: Save    ESC: Exit  
F1: General Help    F9: Load Default settings

### Date & Time

The Date and Time items show the current date and time on the computer. If you are running a Windows OS, these items are automatically updated whenever you make changes to the Windows Date and Time Properties utility.

### ▶ SATA1

This motherboard supports six SATA channels and each channel allows one SATA device to be installed. Use these items to configure each device on the SATA channel.

CMOS SETUP UTILITY - Copyright (C) 1985-2008, American Megatrends, Inc.  
SATA1

SATA1		Help Item
Device	: Not Detected	
Type	Auto	Select the type of device connected to the system.
LBA/Large Mode	Auto	
Block (Multi-Sector Transfer)	Auto	
PIO Mode	Auto	
DMA Mode	Auto	
S.M.A.R.T	Auto	
32Bit Data Transfer	Enabled	

↑↓ ↔ : Move    Enter : Select    +/- : Value    F10: Save    ESC: Exit  
F1: General Help    F9: Load Default settings

**Type (Auto)**

Use this item to configure the type of the IDE device that you specify. If the feature is enabled, it will enhance hard disk performance by reading or writing more data during each transfer.

**LBA/Large Mode (Auto)**

Use this item to set the LAB/Large mode to enhance hard disk performance by optimizing the area the hard disk is visited each time.

**Block (Multi-Sector Transfer) (Auto)**

If the feature is enabled, it will enhance hard disk performance by reading or writing more data during each transfer.

**PIO Mode (Auto)**

Use this item to set the PIO mode to enhance hard disk performance by optimizing the hard disk timing.

**DMA Mode (Auto)**

DMA capability allows user to improve the transfer-speed and data-integrity for compatible IDE devices.

**S.M.A.R.T. (Auto)**

The S.M.A.R.T. (Self-Monitoring, Analysis and Reporting Technology) system is a diagnostics technology that monitors and predicts device performance. S.M.A.R.T. software resides on both the disk drive and the host computer.

**32Bit Data Transfer (Enabled)**

Use this item to set the onboard SATA-IDE channel to be disabled, IDE, or RAID.

Press <Esc> to return to the Standard CMOS Setup page.

**IDE BusMaster (Enabled)**

This item enables or disables the DMA under DOS mode. We recommend you to leave this item at the default value.

**Drive A: (1.44 MB 3<sup>1</sup>/<sub>2</sub>" )**

This item defines the characteristics of any diskette drive attached to the system. You can connect one or two diskette drives.

Press <Esc> to return to the main menu setting page.

## Advanced Setup

This page sets up more advanced information about your system. Handle this page with caution. Any changes can affect the operation of your computer.

CMOS Setup Utility - Copyright (C) 1985-2008, American Megatrends, Inc.  
Advanced Setup

		Help Item
Thermal Management	Enabled	
TM Status	TM1/TM2	
Limit CPUID MaxVal	Disabled	For the processor its CPUID belows 0F41h.
Enhanced Halt (C1E)	Disabled	TM2 only can be enabled under below setting.
Intel XD Bit	Disabled	1. Freq.>=3.6GHz FSB800
Intel EIST	Disabled	2. Freq.>=2.8GHz FSB533
Intel Virtualization Technol	Enabled	
Quick Power on Self Test	Enabled	
Boot Up Numlock Status	On	
APIC Mode	Enabled	
1st Boot Device	Hard Drive	
2nd Boot Device	CD/DVD	
3rd Boot Device	1st FLOPPY DRIVE	
▶ Hard Disk Drives	Press Enter	
▶ Removable Drives	Press Enter	
Boot Other Device	Yes	

↑↓ <> :Move Enter: Select +/-: Value F10: Save ESC: Exit  
F1: General Help F9: Load Default settings

### Thermal Management (Enabled)

This item displays CPU's temperature and enables you to set a safe temperature to Prescott CPU.

### TM Status (TM1/TM2)

This item displays CPU Monitor status.

### Limit CPUID MaxVal (Disabled)

Use this item to enable or disable the Max CPU ID value limit. When supports Prescott and LGA775 CPUs, enables this to prevent the system from "rebooting" when trying to install Windows NT 4.0.

### Enhanced Halt (C1E) (Disabled)

This item enables or disables enhanced halt.

### Intel XD Bit (Disabled)

This item enables or disables the Intel XD Bit technology.

### Intel EIST (Disabled)

This item allows users to enable or disable the EIST (Enhanced Intel Speedstep Technology) function. This item shows only if the CPU supports EIST.

### Intel Virtualization Technol (Enabled)

When enabled, a VMM can utilize the additional hardware capabilities provided by Vendor Pool Technology.

### Quick Power on Self Test (Enabled)

Enable this item to shorten the power on testing (POST) and have your system start up faster. You might like to enable this item after you are confident that your system hardware is operating smoothly.

Using BIOS

**Boot Up Numlock Status (On)**

This item defines if the keyboard Num Lock key is active when your system is started.

**APIC Mode (Enabled)**

This item allows you to enable or disable the APCI (Advanced Programmable Interrupt Controller) mode. APIC provides symmetric multi-processing (SMP) for systems, allowing support for up to 60 processors.

**1st/2nd/3rd Boot Device (Hard Drive/CD/DVD/1st FLOPPY DRIVE)**

Use this item to determine the device order the computer used to look for an operating system to load at start-up time. The devices showed here will be different depending on the exact devices installed on your motherboard.

**► Hard Disk Drives (Press Enter)**

Scroll to this item and press <Enter> to view the following screen:

CMOS Setup Utility - Copyright (C) 1985-2008, American Megatrends, Inc.  
Hard Disk Drives

Hard Disk Drives		Help Item
1st Drive	WDC WD1600JS-22MHB0	Specifies the boot sequence from the available devices.

↑↓ → ←: Move    Enter: Select    +/-: Value    F10: Save    ESC: Exit  
F1: General Help    F9: Load Default Settings

Press <Esc> to return to the Advanced Setup page.

**► Removable Drives (Press Enter)**

Scroll to this item and press <Enter> to view the following screen:

CMOS Setup Utility - Copyright (C) 1985-2008, American Megatrends, Inc.  
Removable Drives

Removable Drives	Help Item
1st Drive      1st FLOPPY DRIVE	Specifies the boot sequence from the available devices.

↑↓ <> : Move    Enter : Select    +/- : Value    F10: Save    ESC: Exit  
F1: General Help      F9: Load Default settings

Press <Esc> to return to the Advanced Setup page.

**Boot Other Device (Yes)**

When enabled, the system searches all other possible locations for an operating system if it fails to find one in the devices specified under the First, Second and Third boot devices.

Press <Esc> to return to the main menu setting page.

### ***Advanced Chipset Setup***

This page sets up more advanced information about your system. Handle this page with caution. Any changes can affect the operation of your computer.

CMOS Setup Utility - Copyright (C) 1985-2008, American Megatrends, Inc.  
Advanced Chipset Setup

		Help Item
Memory Remap Feature	Enabled	
HPET	Enabled	
Intel Robson	Enabled	ENABLE: Allow remapping of overlapped PCI memory above the total physical memory.  DISABLE: Do not allow remapping of memory.

↑↓ <> : Move    Enter : Select    +/-: Value    F10: Save    ESC: Exit  
F1: General Help    F9: Load Default settings

#### **Memory Remap Feature (Enabled)**

This item allows users to enable or disable memory hole remapping.

#### **HPET (Enabled)**

This item enables or disables HPET (High Precision Event Timer) support.

#### **Intel Robson (Enabled)**

This item enables or disables Intel Robson (Intel Turbo Memory Technology) support.

Press <Esc> to return to the main menu setting page.

## Integrated Peripherals

This page sets up some parameters for peripheral devices connected to the system.

CMOS Setup Utility - Copyright (C) 1985-2008, American Megatrends, Inc.  
Integrated Peripherals

Onboard SATA Mode	Enhanced	Help Item
SATA Configuration	IDE	
Onboard LAN Function	Enabled	Options
Onboard LAN Boot ROM	Disabled	
Onboard AUDIO Function	Enabled	Disabled
Serial Port1 Address	3F8/IRQ4	Compatible
USB Functions	Enabled	Enhanced
Legacy USB Support	Enabled	
On Chip SATA2 Controller	AHCI+IDE Mode	

↑↓ ↔ : Move Enter: Select +/-: Value F10: Save ESC: Exit  
F1: General Help F9: Load Default settings

### Onboard SATA Mode (Enhanced)

Use this item to select the mode of the Serial ATA.

### SATA Configuration (IDE)

Use this item to show the Serial ATA Configuration options.

### OnBoard LAN Function (Enabled)

Use this item to enable or disable the onboard LAN function.

### OnBoard LAN Boot ROM (Disabled)

Use this item to enable or disable the booting from the onboard LAN or a network add-in card with a remote boot ROM installed.

### Onboard AUDIO Function (Enabled)

Use this item to enable or disable the onboard Audio function.

### Serial Port1 Address (3F8/IRQ4)

Use this item to enable or disable the onboard COM1 serial port, and to assign a port address.

### USB Functions (Enabled)

Use this item to enable or disable the USB function.

### Legacy USB Support (Enabled)

Use this item to enable or disable support for legacy USB devices.

### On Chip SATA2 Controller (AHCI+IDE Mode)

This item allows you to enable or disable the onchip Serial ATA controller.

Press <Esc> to return to the main menu setting page.



## Power Management Setup

This page sets up some parameters for system power management operation.

CMOS Setup Utility - Copyright (C) 1985-2008, American Megatrends, Inc.  
Power Management Setup

	S3 (STR)	Help Item
ACPI Suspend Type	S3 (STR)	
Soft-off by PWR-BTTN	Instant Off	
PWRON After PWR-Fail	Power Off	Select the ACPI state used for System Suspend.
Resume by Ring	Disabled	
Resume by PCI/PCI-E/Lan PME	Disabled	
Resume by USB (S3)	Disabled	
Resume By PS2 KB (S3)	Disabled	
Resume By PS2 MS (S3)	Disabled	
Resume on RTC Alarm	Disabled	

] <> :Move Enter: Select +/-: Value F10: Save ESC: Exit  
F1: General Help F9: Load Default settings

### ACPI Suspend Type (S3)

Use this item to define how your system suspends. In the default, S3, the suspend mode is a suspend to RAM, i.e., the system shuts down with the exception of a refresh current to the system memory.

### Soft-off by PWR-BTTN (Instant off)

Under ACPI (Advanced Configuration and Power management Interface) you can create a software power down. In a software power down, the system can be resumed by Wake Up Alarms. This item lets you install a software power down that is controlled by the power button on your system. If the item is set to Instant-Off, then the power button causes a software power down. If the item is set to Delay 4 Sec, then you have to hold the power button down for four seconds to cause a software power down.

### PWRON After PWR-Fail (Power Off)

This item enables your computer to power off, automatically restart or return to its previous status after abnormal power lost.

### Resume by Ring (Disabled)

The system can be turned off with a software command. If you enable this item, the system can automatically resume if there is an incoming call on the Modem. You must use an ATX power supply in order to use this feature.

### Resume by PCI/PCI-E/Lan PME (Disabled)

The system can be turned off with a software command. If you enable this item, the system can automatically resume if there is an incoming call on the PCI Modem or PCI LAN card. You must use an ATX power supply in order to use this feature. Use this item to do wake-up action if inserting the PCI card.

### Resume by USB (S3) (Disabled)

This item allows you to enable/disable the USB device wakeup function from S3 mode.

Using BIOS

**Resume By PS2 KB (S3) (Disabled)**

This item enables or disables you to allow keyboard activity to awaken the system from S3 mode.

**Resume By PS2 MS (S3) (Disabled)**

This item enables or disables you to allow mouse activity to awaken the system from S3 mode.

**Resume on RTC Alarm (Disabled)**

The system can be turned off with a software command. If you enable this item, the system can automatically resume at a fixed time based on the system's RTC (realtime clock). Use the items below this one to set the date and time of the wake-up alarm. You must use an ATX power supply in order to use this feature.

Press <Esc> to return to the main menu setting page.

***PCI / PnP Setup***

This page sets up some parameters for devices installed on the PCI bus and those utilizing the system plug and play capability.

CMOS Setup Utility - Copyright (C) 1985-2008, American Megatrends, Inc.  
PCI / PnP Setup

Init Display First	PCI	Help Item
		Select which graphics controller to use as the primary boot device.

↑↓ ↔ : Move    Enter : Select    +/- : Value    F10: Save    ESC: Exit  
F1: General Help    F9: Load Default settings

**Init Display First (PCI)**

Use this item to select which graphics controller to use as the primary boot devices.

Press <Esc> to return to the main menu setting page.

### PC Health Status

On motherboards support hardware monitoring, this item lets you monitor the parameters for critical voltages, temperatures and fan speeds.

CMOS Setup Utility - Copyright (C) 1985-2008, American Megatrends, Inc.  
PC Health Status

-- System Hardware Monitor --		Help Item
▶ Smart Fan Function	Press Enter	
System Temperature	: 31°C/87°F	
CPU FAN Speed	: 5625 RPM	
SYS FAN Speed	: N/A	
CPU Core	: 1.056 V	
VDIMM	: 1.632 V	
-- PEFI Mode --		
Offset to TCC Activation Temp.	: -66	

↑↓ ↔ : Move Enter : Select +/- : Value F10: Save ESC: Exit  
F1: General Help F9: Load Default settings

#### ▶ Smart Fan Function

Scroll to this item and press <Enter> to view the following screen:

CMOS Setup Utility - Copyright (C) 1985-2008, American Megatrends, Inc.  
Smart Fan Function

		Help Item
CPU SMART FAN Control	Disabled	
SYS SMART FAN Control	Disabled	
		Options
		Disabled
		Enabled

↑↓ ↔ : Move Enter : Select +/- : Value F10: Save ESC: Exit  
F1: General Help F9: Load Default settings

#### **CPU/SYS SMART FAN Control (Disabled)**

These items enable you to define the CPU/System temperature by smartly adjusting the CPU/System fan. When it is set at certain temperature, the CPU/SYS Fan PWM value will change accordingly.

Press <Esc> to return to the PC Health Status page.



*ECS supports the latest PECI host technology. While using Wolfdale or Yorkfield CPU, the original images of the BIOS item "PC Health Status" and "Smart FAN Function" will be replaced by PECI mode and negative number. (The max data from PECI is zero.)*

CMOS Setup Utility - Copyright (C) 1985-2008, American Megatrends, Inc.  
PC Health Status

Hardware Health Event Monitoring		Help Item
▶Smart Fan Function	Press Enter	
System Temperature	33°C/91°F	
CPU Fan Speed:	2537 RPM	
SYS FAN Speed:	0 RPM	
CPU Vcore:	1.280V	
VDIMM:	1.840V	
-- PECI Mode--		
Offset to TCC Activation Temp.:	-20	

↑↓ → ← : Move Enter : Select +/- : Value F10: Save ESC: Exit  
F1: General Help F9: Optimized Defaults

CMOS Setup Utility - Copyright (C) 1985-2008, American Megatrends, Inc.  
Smart Fan Function

SMART Fan Control		Help Item
SMART Fan Control	Enabled	
SMART Fan start PWM value	28	
SMART Fan start Offset (-)	30	
CPU DeltaT	+3	
Fan1 Slope PWM value/1 Unit	5	
Fan1 Full Speed Offset (-)	10	
SMART Fan2 Control	Disabled	
		Options
		Disabled
		Enabled

↑↓ → ← : Move Enter : Select +/- : Value F10: Save ESC: Exit  
F1: General Help F9: Optimized Defaults

Press <Esc> to return to the PC Health Status page.

### System Component Characteristics

These items display the monitoring of the overall inboard hardware health events, such as System & CPU temperature, CPU & DIMM voltage, CPU & system fan speed,...etc.

- System Temperature
- CPU FAN Speed
- SYS FAN Speed
- CPU Core
- VDIMM
- Offset to TCC Activation Temp.

Press <Esc> to return to the main menu setting page.

Using BIOS

### **M.I.B. (MB Intelligent BIOS)**

This page enables you to set the clock speed and system bus for your system. The clock speed and system bus are determined by the kind of processor you have installed in your system.

CMOS Setup Utility - Copyright (C) 1985-2008, American Megatrends, Inc.  
M.I.B. (MB Intelligent BIOS)

Manufacturer: Intel		Help Item
Ratio Status: Unlocked (Min:06, Max:Unlimited)		
Ratio Actual Value: 6		
<b>Performance Level</b>	<b>Standard</b>	<b>Options</b>
CPU Frequency Setting :	333MHz	Standard
Over-clocking Function. :	Disabled	Enhanced
Auto Detect DIMM/PCI Clk	Enabled	
Spread Spectrum	Enabled	
Memory Current Type: CL9/Trcd9/Trp9Tras24		
DRAM Frequency	Auto	
Configure DRAM Timing by SPD	Enabled	
CPU Base Voltage 1.0875V		
CPU Voltage	Normal	
Memory Voltage	1.50V	
NB Voltage	1.16V	

↑↓ ↔ : Move Enter: Select +/-: Value F10: Save ESC: Exit  
F1: General Help F9: Load Default settings

#### **Manufacturer: Intel**

This item displays the information of current manufacturer of the CPU installed in your computer.

#### **Ratio Status/Ratio Actual Value**

These items show the Locked ratio status and the actual ratio of the CPU installed in your system.

#### **Performance Level (Standard)**

If the item is set to *Standard*, the system will run at its basic performance level. If the item is set to *Enhanced*, the system will run at its good performance level and enable overlocking function.

#### **CPU Frequency Setting (333MHz)**

This item is used to set the CPU Frequency.

#### **Over-clocking Function. (Disabled)**

This item decides the CPU over-clocking function/frequency installed in your system. If the over-clocking fails, please turn off the system power. And then, hold the PageUp key (similar to the Clear CMOS function) and turn on the power, the BIOS will recover the safe default.

#### **Auto Detect DIMM/PCI Clk (Enabled)**

When this item is enabled, BIOS will disable the clock signal of free DIMM/PCI slots.

#### **Spread Spectrum (Enabled)**

If you enable spread spectrum, it can significantly reduce the EMI (Electro-Magnetic Interference) generated by the system.

#### **Memory Current Type (CL9/Trcd9/Trp9/Tras24)**

This item is used to show the current memory type.

Using BIOS

**DRAM Frequency (Auto)**

This item enables users to adjust the DRAM frequency. The default setting is auto and we recommend users leave the setting unchanged. Modify it at will may cause the system to be unstable.

**Configure DRAM Timing by SPD (Enabled)**

This item allows users to enable or disable the DRAM timing defined by the Serial Presence Detect electrical. User please note that if setting this item to auto, the following two items are not available.

**CPU Base Voltage (1.0875V)**

This item is used to show the CPU Base voltage.

**CPU Voltage (Normal)**

This item allows users to adjust the CPU voltage.

**Memory Voltage (1.50V)**

This item allows users to adjust the DDR memory voltage.

**NB Voltage (1.16V)**

This item allows users to adjust the northbridge voltage.

Press <Esc> to return to the main menu setting page.

### ***Load Default Settings***

This option opens a dialog box to ask if you are sure to install optimized defaults or not. You select [OK], and then <Enter>, the Setup Utility loads all default values; or select [Cancel], and then <Enter>, the Setup Utility does not load default values.

### ***Supervisor Password***

This page helps you install or change a password.

CMOS Setup Utility - Copyright (C) 1985-2008, American Megatrends, Inc.  
Supervisor Password

Supervisor Password : Installed		Help Item
Change Supervisor Password	Press Enter	Install or Change the password.
Security Check	Setup	

↑|↔ :Move Enter:Select +/-:Value F10:Save ESC:Exit  
F1:General Help F9:Load Default settings

### **Supervisor Password (Installed)**

This item indicates whether a supervisor password has been set. If the password has been installed, *Installed* displays. If not, *Not Installed* displays.

### **Change Supervisor Password (Press Enter)**

You can select this option and press <Enter> to access the sub menu. You can use the sub menu to change the supervisor password.

### **Security Check (Setup)**

If you have installed password protection, this item defines if the password is required at system start up, or if it is only required when a user tries to enter the Setup Utility.

Press <Esc> to return to the main menu setting page.

### ***User Password***

This page helps you install or change a password.

CMOS Setup Utility - Copyright (C) 1985-2008, American Megatrends, Inc.  
User Password

User Password : Not Installed	Help item
Change User Password <span style="float: right;">Press Enter</span>	Install or Change the password.

↑↓ <> : Move    Enter : Select    +/- : Value    F10: Save    ESC: Exit  
F1: General Help    F9: Load Default settings

#### **User Password (Not Installed)**

This item indicates whether a user password has been set. If the password has been installed, *Installed* displays. If not, *Not Installed* displays.

#### **Change User Password (Press Enter)**

You can select this option and press <Enter> to access the sub menu. You can use the sub menu to change the user password. This item will show if the supervisor password is set.

Press <Esc> to return to the main menu setting page.

#### ***Save & Exit Setup***

Highlight this item and press <Enter> to save the changes that you have made in the Setup Utility and exit the Setup Utility. When the Save and Exit dialog box appears, select [OK] to save and exit, or select [Cancel] to return to the main menu.

#### ***Exit Without Saving***

Highlight this item and press <Enter> to discard any changes that you have made in the Setup Utility and exit the Setup Utility. When the Exit Without Saving dialog box appears, select [OK] to discard changes and exit, or select [Cancel] to return to the main menu.



*If you have made settings that you do not want to save, use the “Exit Without Saving” item and select [OK] to discard any changes you have made.*

This concludes Chapter 3. Refer to the next chapter for information on the software supplied with the motherboard.



## Chapter 4

### *Using the Motherboard Software*

#### **About the Software CD-ROM**

The support software CD-ROM that is included in the motherboard package contains all the drivers and utility programs needed to properly run the bundled products. Below you can find a brief description of each software program, and the location for your motherboard version. More information on some programs is available in a README file, located in the same directory as the software. Before installing any software, always inspect the folder for files named README.TXT, INSTALL.TXT, or something similar. These files may contain important information that is not included in this manual.



1. *Never try to install all software from folder that is not specified for use with your motherboard.*
2. *The notice of Intel HD audio installation (optional): The Intel High Definition audio functionality unexpectedly quits working in Windows Server 2003 Service Pack 1 or Windows XP Professional x64 Edition. Users need to download and install the update packages from the Microsoft Download Center “before” installing HD audio driver bundled in the Driver CD. Please log on to <http://support.microsoft.com/default.aspx?scid=kb:en-us;901105#apliesto> for more information.*

#### **Auto-installing under Windows XP/Vista**

The Auto-install CD-ROM makes it easy for you to install the drivers and software for your motherboard.



*If the Auto-install CD-ROM does not work on your system, you can still install drivers through the file manager for your OS (for example, Windows Explorer). Refer to the Utility Folder Installation Notes later in this chapter.*

The support software CD-ROM disc loads automatically under Windows XP/Vista. When you insert the CD-ROM disc in the CD-ROM drive, the autorun feature will automatically bring up the install screen. The screen has three buttons on it, Setup, Browse CD and Exit.



*If the opening screen does not appear; double-click the file “setup.exe” in the root directory.*

Using the Motherboard Software

### Setup Tab

<b>Setup</b>	Click the <b>Setup</b> button to run the software installation program. Select from the menu which software you want to install.
<b>Browse CD</b>	<p>The <b>Browse CD</b> button is the standard Windows command that allows you to open Windows Explorer and show the contents of the support CD.</p> <p>Before installing the software from Windows Explorer, look for a file named README.TXT, INSTALL.TXT or something similar. This file may contain important information to help you install the software correctly.</p> <p>Some software is installed in separate folders for different operating systems, such as Windows XP/Vista. Always go to the correct folder for the kind of OS you are using.</p> <p>In install the software, execute a file named SETUP.EXE or INSTALL.EXE by double-clicking the file and then following the instructions on the screen.</p>
<b>Exit</b>	The <b>EXIT</b> button closes the Auto Setup window.

### Application Tab

Lists the software utilities that are available on the CD.

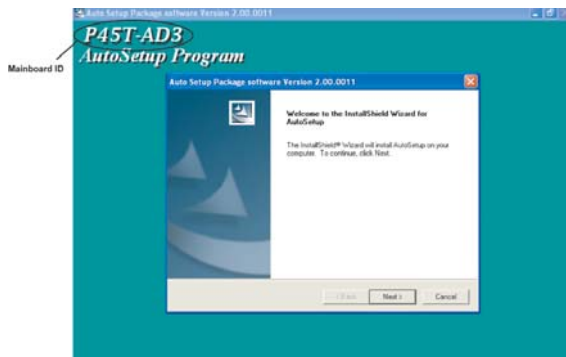
### Read Me Tab

Displays the path for all software and drivers available on the CD.

### Running Setup

Follow these instructions to install device drivers and software for the motherboard:

1. Click **Setup**. The installation program begins:

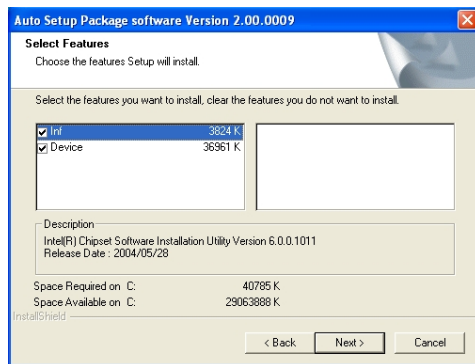


*The following screens are examples only. The screens and driver lists will be different according to the motherboard you are installing.*

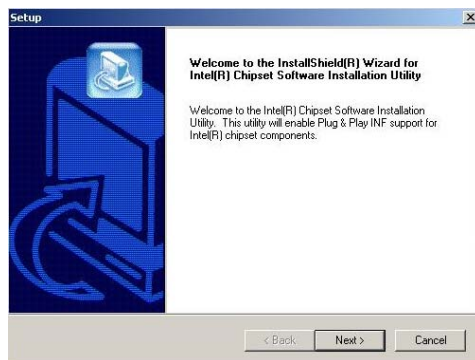
The motherboard identification is located in the upper left-hand corner.

## Using the Motherboard Software

2. Click **Next**. The following screen appears:



3. Check the box next to the items you want to install. The default options are recommended.
4. Click **Next** run the Installation Wizard. An item installation screen appears:



5. Follow the instructions on the screen to install the items.



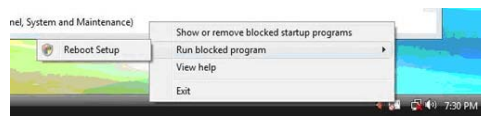
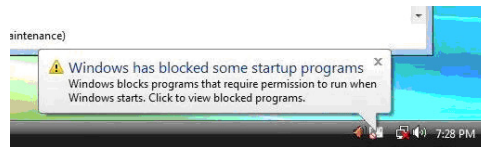
1. Drivers and software are automatically installed in sequence. Follow the onscreen instructions, confirm commands and allow the computer to restart a few times to complete the installation.

2. During the Windows Vista Driver Auto Setup Procedure, users should use one of the following two methods to install the driver after the system restart.

## Using the Motherboard Software

### Method 1. Run Reboot Setup

Windows Vista will block startup programs by default when installing drivers after the system restart. You must select taskbar icon **Run Blocked Program** and run **Reboot Setup** to install the next driver, until you finish all drivers installation.



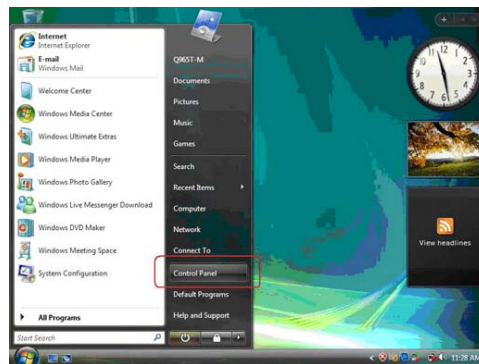
### Method 2. Disable UAC (User Account Control)

\* For administrator account only. Standard user account can only use Method 1.

Disable Vista UAC function before installing drivers, then use CD driver to install drivers, it will continue to install drivers after system restart without running blocked programs.

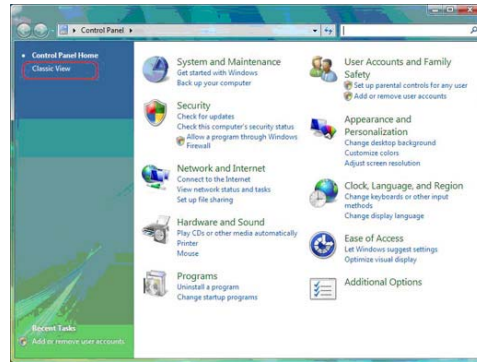
Follow these instructions to Disable Vista UAC function:

1. Go to **Control Panel**.

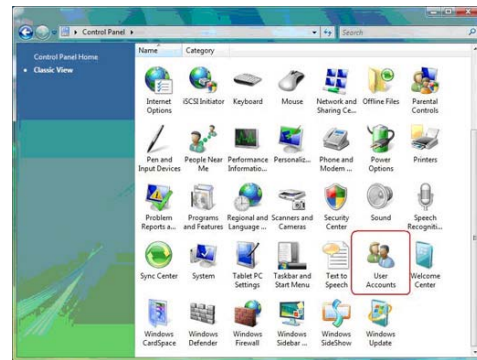


Using the Motherboard Software

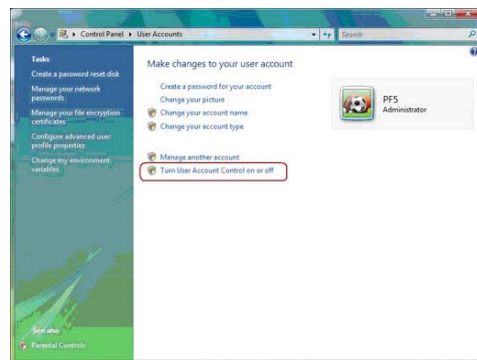
2. Select **Classic View**.



3. Set **User Account**.

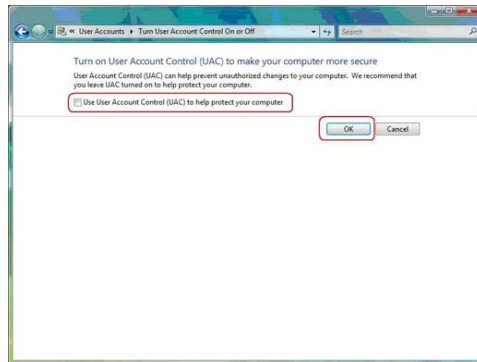


4. Select **Turn User Account Control on or off** and press **Continue**.



Using the Motherboard Software

5. Disable **User Account Control (UAC) to help protect your computer** item and press **OK**, then press **Restart Now**. Then you can restart your computer and continue to install drivers without running blocked programs.



## Manual Installation

Insert the CD in the CD-ROM drive and locate the PATH.DOC file in the root directory. This file contains the information needed to locate the drivers for your motherboard.

Look for the chipset and motherboard model; then browse to the directory and path to begin installing the drivers. Most drivers have a setup program (SETUP.EXE) that automatically detects your operating system before installation. Other drivers have the setup program located in the operating system subfolder.

If the driver you want to install does not have a setup program, browse to the operating system subfolder and locate the readme text file (README.TXT or README.DOC) for information on installing the driver or software for your operating system.

## Utility Software Reference

All the utility software available from this page is Windows compliant. They are provided only for the convenience of the customer. The following software is furnished under license and may only be used or copied in accordance with the terms of the license.



*These software(s) are subject to change at anytime without prior notice. Please refer to the support CD for available software.*

This concludes chapter 4.

## Chapter 5

### *ATI CrossFireX™ Technology Support*

---

This motherboard supports the ATI CrossFireX™ Technology that allows you to install multi-graphics processing units (GPU) graphics cards. Follow the installation procedures in this section.

#### **Requirements**

- 1 You should have a CrossFireX™ Ready motherboard, a CrossFireX™ Edition graphics card and a CrossFireX™ ready graphics card.
- 2 Visit the ECS website ([www.ecs.com.tw](http://www.ecs.com.tw)) for a list of qualified CrossFireX™ ready graphics card for this motherboard.
- 3 Make sure that your graphics card driver supports the ATI CrossFireX™ technology. Download the latest driver from the ATI website ([www.ati.com](http://www.ati.com)).
- 4 Make sure that your power supply unit (PSU) can provide at least the minimum power required by your system.

#### **Installing a single graphics card**

1. Install a PCI Express x16 graphics card on the **PCIE16X\_1** slot.



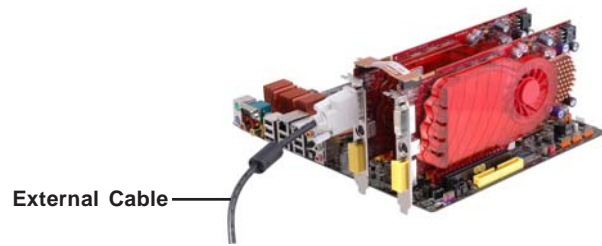
2. Connect one end of the external cable to the graphics card.
3. Connect the loose end to the corresponding port on your monitor.
4. Connect an auxiliary power source from the power supply to the graphics card.

## Installing CrossFireX™ graphics cards

1. Insert the CrossFireX™ graphics cards into the **PCIE16X\_1** and **PCIE16X\_2** slots. Make sure that the card is properly seated on the slot.



2. Connect an external cable to the CrossFireX™ ready graphics card installed on the **PCIE16X\_2** slot.



3. Connect the two CrossFireX™ Edition graphics cards installed on **PCIE16X\_1** and **PCIE16X\_2** slots with the CrossFire Bridge.



4. Connect the external cable to the corresponding port on your monitor.
5. Connect an auxiliary power source from the power supply to the graphics cards.



**Table A: Supported PCI Express VGA Card List for CrossFireX™ Function**

Vender	PCI-E Card	
ATI	MSI RX1300 TD256E (256M)	Radeon X1300Pro
	ATI X1600XT (256M)	Radeon X1600XT
	PowerColor X1900XTX (512M)	Radeon X1900XTX
	ASUS EAX1950PRO/HTDP/256M/A (256M)	Radeon X1950Pro
	MSI RX2600XT (256MB)	Radeon HD2600XT
	MSI RX3850-T2D256E-OC (256MB)	Radeon HD3850
	POWER Color AX3870 512MD-PH	Radeon HD3870

## The Catalyst™ Control Center Dialog Box

### View

The Catalyst™ Control Center provides two views; one is Standard view for beginners, the other is Advance view for advanced users to access and configure the complete features of the software.

### To enable CrossFireX™:

- Set the view to **Advance**.
- Click the CrossFireX™ item in Graphics Settings.
- In the CrossFireX™ Setting dialog, tick the box opposite Enable CrossFireX™.
- Click **OK** to effect the setting.



Set to Advanced View to enable the CrossFireX™ function.

## Chapter 6

### Intel®Matrix Storage Manager RAID Configurations

The Intel®Matrix Storage Manager allows you to configure RAID 0, and 1 sets on the external Serial ATA hard disk drives.

#### Before creating a RAID set

##### Prepare the following items:

1. One SATA HDD.
2. A write-enabled floppy disk.
3. Microsoft® Windows® OS installation disk (Windows XP/Vista).
4. Motherboard support CD with Intel®Matrix Storage Manager driver.

##### Complete the following steps before you create a RAID set:

1. Install the external Serial ATA hard disk drive (HDD) on your system.
2. Set the *Onboard SATA Mode* item in the BIOS to *.RAID..*

See section “Integrated Peripherals” for details.



3. Enter the Intel®Matrix Storage Manager option to set up your RAID configuration.
4. Create an Intel®Matrix Storage Manager driver disk for Windows® OS installation. See section “Creating a RAID driver disk” for details.
5. Install the Intel®Matrix Storage Manager driver after the Windows® OS had been installed.

### Intel®Matrix Storage Manager RAID Configurations

## Entering Intel®Matrix Storage Manager RAID BIOS utility

1. During POST, press <Ctrl-I> to enter the Intel®Matrix Storage Manager RAID BIOS menu.

```

Intel(R) Matrix Storage Manager option ROM v7.6.0.1011 ICH9R wRAID5
Copyright(C) 2003-07 Intel Corporation. All Rights Reserved.

RAID Volumes:
None defined.

Physical Disks:
Port Drive Model      Serial #             Size  Type/Status(Uol ID)
4  Maxtor 7H500F0      H81D3FLH            465.86B Non-RAID Disk
5  ST3500320AS         S0M8KLEY            465.86B Non-RAID Disk

Press [Ctrl-I] to enter Configuration Utility...

```

2. The main Intel®Matrix Storage Manager RAID BIOS menu appears.
3. Use the arrow keys to move the color bar and navigate through the items.

```

Intel(R) Matrix Storage Manager option ROM v7.6.0.1011 ICH9R wRAID5
Copyright(C) 2003-07 Intel Corporation. All Rights Reserved.

[ MAIN MENU ]
1. Create RAID Volume
2. Delete RAID Volume
3. Reset Disks to Non-RAID
4. Exit

[ DISK VOLUME INFORMATION ]

RAID Volumes:
None defined.

Physical Disks:
Port Drive Model      Serial #             Size  Type/Status(Uol ID)
4  Maxtor 7H500F0      H81D3FLH            465.86B Non-RAID Disk
5  ST3500320AS         S0M8KLEY            465.86B Non-RAID Disk

[F1]-Select      [ESC]-Exit      [ENTER]-Select Menu

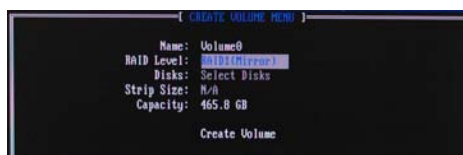
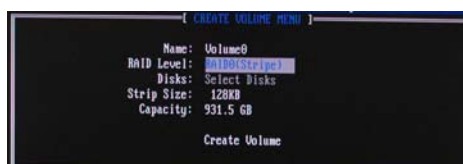
```

## Creating a RAID set

1. In the main Intel®Matrix Storage Manager RAID BIOS menu, highlight *Create RAID Volume* using the up/down arrow key then press <Enter>.



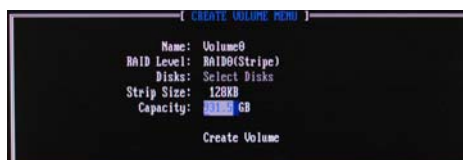
2. When the *RAID Level* item is highlighted, use the up/down arrow key to select the RAID set that you want to create.



When more than two HDDs are installed in your computer, the *Disks* item will be selectable. Then users can select the HDD that you want to belong to the RAID set. Please be noticed that selecting a wrong disk will result in losing the original data of the HDD.



3. Key in the RAID volume capacity. Use the up/down arrow to choose the *Capacity*. The default value indicates the maximum capacity using the selected disks. Entering a lower capacity allows you to create a second volume on these disks.



- When done, press <Enter> to confirm the creation of the RAID set. A dialogue box appears to confirm the action. Press <Y> to confirm; otherwise, press <N>.



Pressing <Y> deletes all the data in the HDDs.

- The following screen appears, displaying the relevant information about the RAID set you created.



Users please be noted that RAID 0 (Stripe) is set to accelerate the data access, and RAID 1 (Mirror) is set to provide the data backup. If you want to set RAID 0, you need to set the *2nd Boot Device* item in the BIOS to *Intel Volume0*. See section “Advanced Setup” for details.



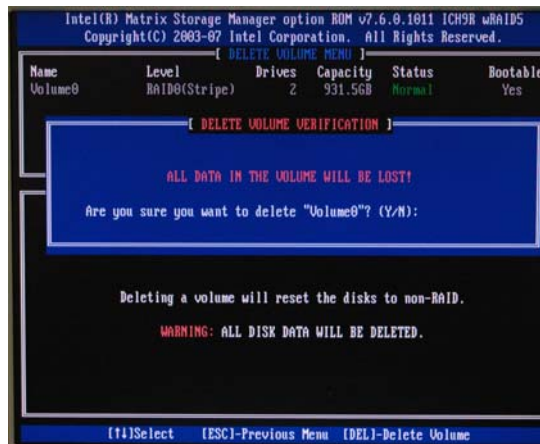
Intel® Matrix Storage Manager RAID Configurations

## Deleting a RAID set

1. In the main Intel®Matrix Storage Manager RAID BIOS menu, highlight *Delete RAID Volume* using the up/down arrow key then press <Enter>.



2. Use the space bar to select the RAID set you want to delete.  
Press the <Del> key to delete the set.
3. A dialogue box appears to confirm the action. Press <Y> to confirm; otherwise, press <N>.



*Pressing <Y> deletes all the data in the HDDs.*

## Resetting disks to Non-RAID



An HDD that has been previously configured as part of another RAID set in another platform is called a broken RAID HDD. When you install a broken RAID HDD, you cannot select this disk when configuring a RAID set through the Intel®Matrix Storage Manager option. If you still want to use this broken RAID HDD as part of the RAID set configured through the Intel®Matrix Storage Manager, you may do so by resetting the disk to Non-RAID. You will, however, lose all data and previous RAID configurations.

### To reset disks to Non-RAID:

1. In the main Intel®Matrix Storage Manager RAID BIOS menu, highlight *Reset Disks to Non-RAID* using the up/down arrow key then press <Enter>.



2. Use the space bar to select the HDD to reset to Non-RAID.
3. A dialogue box appears to confirm the action. Press <Y> to confirm; otherwise, press <N>.

*Pressing <Y> deletes all the data in the HDDs.*

## Exiting Setup

When you have finished, highlight *Exit* using the up/down arrow key then press <Enter> to exit the Intel®Matrix Storage Manager RAID BIOS utility.

A dialogue box appears to confirm the action. Press <Y> to confirm; otherwise, press <N> to return to the Intel®Matrix Storage Manager RAID BIOS menu.